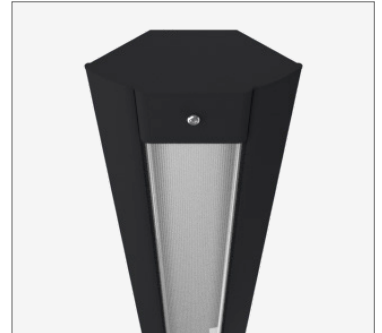
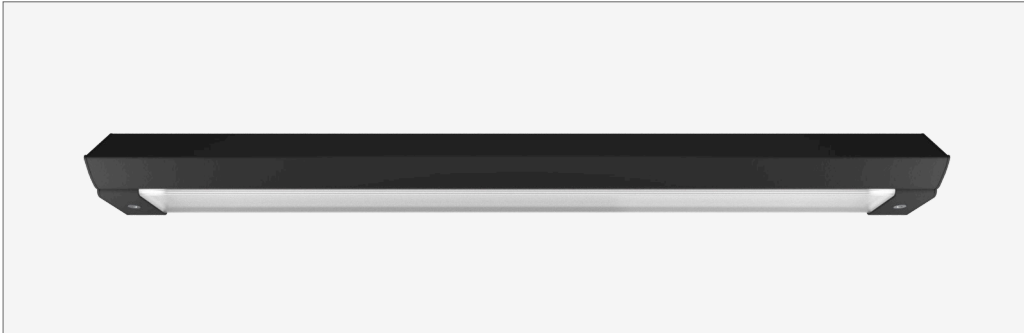


survivor 100 classic cornice



IK17 - 175 joules impact resistance

IP66 - hermetically sealed light module cassette

AT06 - security torx tamper-proof fasteners

description

Heavy-gauge extruded aluminium mounting base and security caps with durable polyester powder coat finish

Impact-resistant UV-stabilised high-transmission polycarbonate light module diffuser

Serviceable replaceable and upgradable light module cassette

Internal socket drive security-torx 304 stainless steel security fasteners

Integral energy efficient Zhaga compliant Tridonic LED modules and power supply unit

Direct-fix surface mounted

Internal stainless steel wire safety lanyards

1.0 m circular flex connection

country of origin

Australia

accreditations

Australian Made and Owned

DALI alliance

EESS

RCM

warranty

7-year standard

10-year on application

applications

extremely robust surface mounted luminaire that enhances safety and security in the most challenging environments. a durable construction ensures dependable operation and superior performance under harsh operating conditions; ideal for applications such as transportation, custodial, public areas, and secure healthcare

standards

AS/NZS 60598.1:2017

AS/NZS 60598.2.1:2014

AS/NZS 60598.2.22:2019

AS/NZS 2293.3:2018

IEC/EN 62262:2002+A1:2021

AS 60529-2004

ANSI/IES LM-79-19

ANSI/IES LM-80-21

ANSI/IES TM-21-21

survivor 100 classic cornice



options

finishes

black texture • white texture polyester powder coat
additional non-standard powder coat colours
35-year warranty powder coat on request

control system

DALI-2 • fixed output • Casambi wireless • switchDIM • 0-10 V

colour rendering index [CRI]

80+ • 90+

correlated colour temperature [CCT]

2700 K • 3000 K • 3500 K • 4000 K • 5000 K • 6500 K • tunable white

coloured LEDs

RGB • RGB+W • RGBW • RGBW+W • red • green • blue

electrical connection

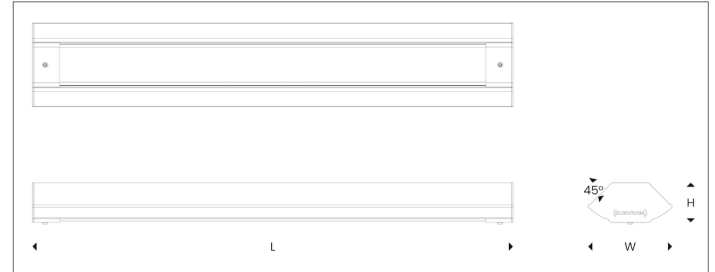
IP68 quick-connect plug+socket • IP20 plug

sensors

type microwave • passive infrared
control system DALI-2 • Casambi wireless • basic on/off
detection mode presence • ambient light

emergency packs

type integrated
monitoring system DALI-2 • OEM proprietary
operating mode maintained • non-maintained • sustained



weights + dimensions [kg / mm]

nominal	L	W	H	weight
500	450	210	100	3.7
700	680	210	100	5.2
1000	960	210	100	7.1
1200	1240	210	100	9
1500	1520	210	100	10.9
1800	1800	210	100	13.1
2100	2080	210	100	16.1
2400	2360	210	100	18.4
2600	2640	210	100	19.9
2900	2920	210	100	22.2

integrated lighting systems

description

fully integrated and modular plug-n-play lighting systems for the most challenging and robust environments. every system is custom-manufactured in Australia using high-quality materials. supplied in pre-fabricated sections with pre-wired light module cassettes, and interconnecting IP68 quick-connect leads; making installation and maintenance effortless. available with multiple circuits, control systems, light sources, finishes, sensors, and emergency packs

sensors

type microwave • passive infrared
control system DALI-2 • Casambi wireless • basic on/off
detection mode presence • ambient light

emergency packs

type integrated
monitoring system DALI-2 • OEM proprietary
operating mode maintained • non-maintained • sustained

survivor 100 classic cornice



CRI 80+ | CCT 3000 K | **830**

nominal length	20%		40%		60%		80%		100%	
	lumens	watts	lumens	watts	lumens	watts	lumens	watts	lumens	watts
500	210	2.5	410	5	620	7.5	830	10	1030	12.5
700	410	5	830	10	1240	15	1650	20	2070	25
1000	620	7.5	1240	15	1860	22.5	2480	30	3100	37.5
1200	830	10	1650	20	2480	30	3310	40	4130	50
1500	1030	12.5	2070	25	3100	37.4	4130	49.9	5160	62.4
1800	1240	15	2480	30	3720	44.9	4960	59.9	6200	74.9
2000	1450	17.5	2890	35	4340	52.5	5780	70	7230	87.5
2400	1650	20	3300	40	4960	60	6610	80	8260	100
2600	1860	22.5	3720	45	5580	67.5	7440	90	9300	112.5
2900	2070	25	4130	50	6200	75	8260	100	10330	125

CRI 80+ | CCT 4000 K | **840**

nominal length	20%		40%		60%		80%		100%	
	lumens	watts	lumens	watts	lumens	watts	lumens	watts	lumens	watts
500	220	2.5	430	5	650	7.5	860	10	1080	12.5
700	430	5	870	10	1300	15	1730	20	2160	25
1000	650	7.5	1300	15	1940	22.5	2590	30	3240	37.5
1200	870	10	1730	20	2590	30	3460	40	4320	50
1500	1080	12.5	2160	25	3240	37.4	4320	49.9	5400	62.4
1800	1300	15	2590	30	3890	44.9	5190	59.9	6490	74.9
2000	1510	17.5	3030	35	4540	52.5	6050	70	7560	87.5
2400	1730	20	3460	40	5190	60	6910	80	8640	100
2600	1950	22.5	3890	45	5830	67.5	7780	90	9720	112.5
2900	2160	25	4320	50	6480	75	8640	100	10800	125

photometric data is nominal and intended for general information purposes only. it is not to be relied upon nor used in place of photometry files issued by Survivor Lighting Pty Ltd
± 5% measurement uncertainty

